



# MAUAO OCEAN HOE SERIES

## 2021



**Saturday 20th November 2021**

**The Mall, Pilot Bay, Mount Maunganui**

**High Tide: 8.49am**

**Low tide: 2.50pm**

8am	Race Paddlers Arrive
8.30 am	Registration / Race 1 Safety Checks
9:20 am	Karakia / Race 1 Briefing (10KM)
	J19 W6 Divisions
	W1/W2 Men/Women/Mixed
	ALL W6 Novice

**9:30 am Race 1 Le Mans Start**

**RACE 1 Paddlers pack up and depart by 11.15am to allow Race 2 paddlers to arrive & register for Race 2. Race 2 paddlers arrive from 11.30am please. Unloading bay is located by Hoe Aroha Rego tent. Park along side road side at Pilot Bay or down at the Boat ramp parking under Mauao.**

**11.30am Race 2 Registrations**

MEN W6 - Open/Master/Snr Master/Gld Master  
Women W6 - Open/Master/Snr Master/Gld Master  
Mixed W6

11.30am Race 2 Safety Checks

12.20pm Race 2 Briefing (18KM)

12.30 pm **Race 2 Le Mans Start**

### **To Enter:**

1. Register online at Wakaama NZ website via your club representative
  2. Make payment to Hoe Aroha 03-0374-0182793-000 Ref: Club & Team
  3. Entry Fees: Juniors (J19s) \$20 each Seniors \$25 each  
(One fee only, can paddle multiple races) - No payments/cash accepted on day
- COVID L2 Rules Apply - refer to covid notes**

Entries close Wednesday 17 Nov 10pm. Rosters close Thursday 18 Nov 12pm.  
All entries to be completed and rosters filled by these dates via the Waka Ama NZ online entry system. No late entries. No on the day entries.

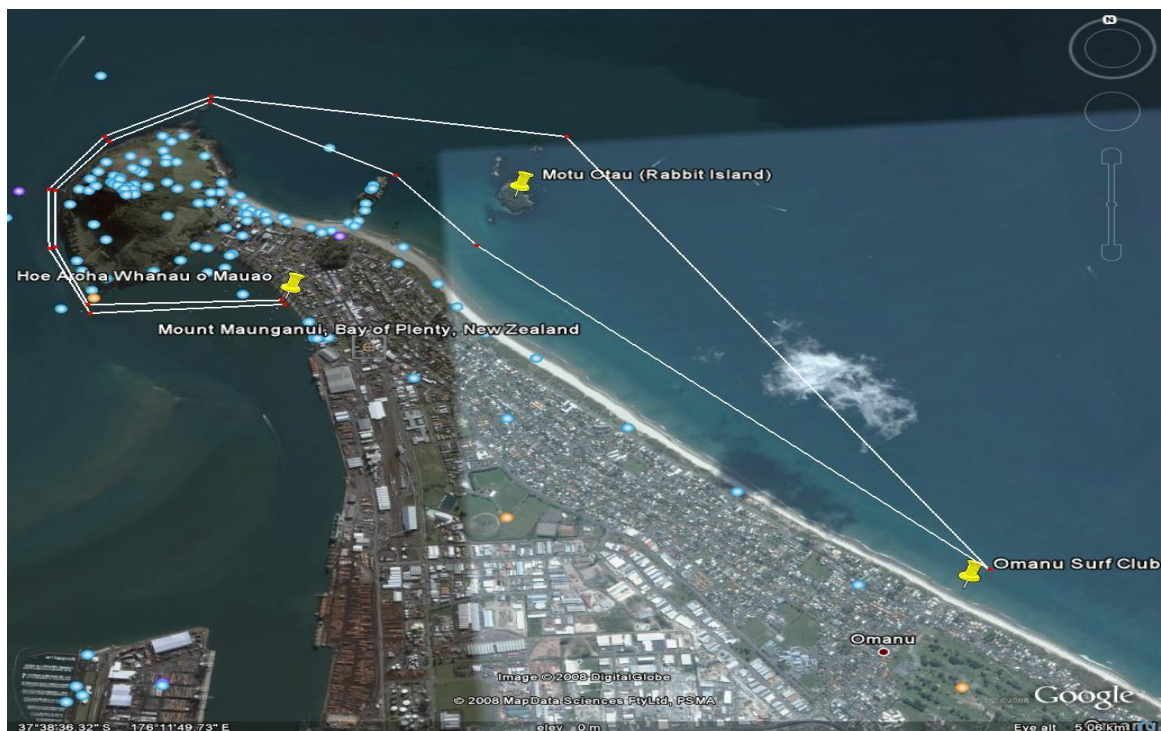


# MAUAO OCEAN HOE SERIES

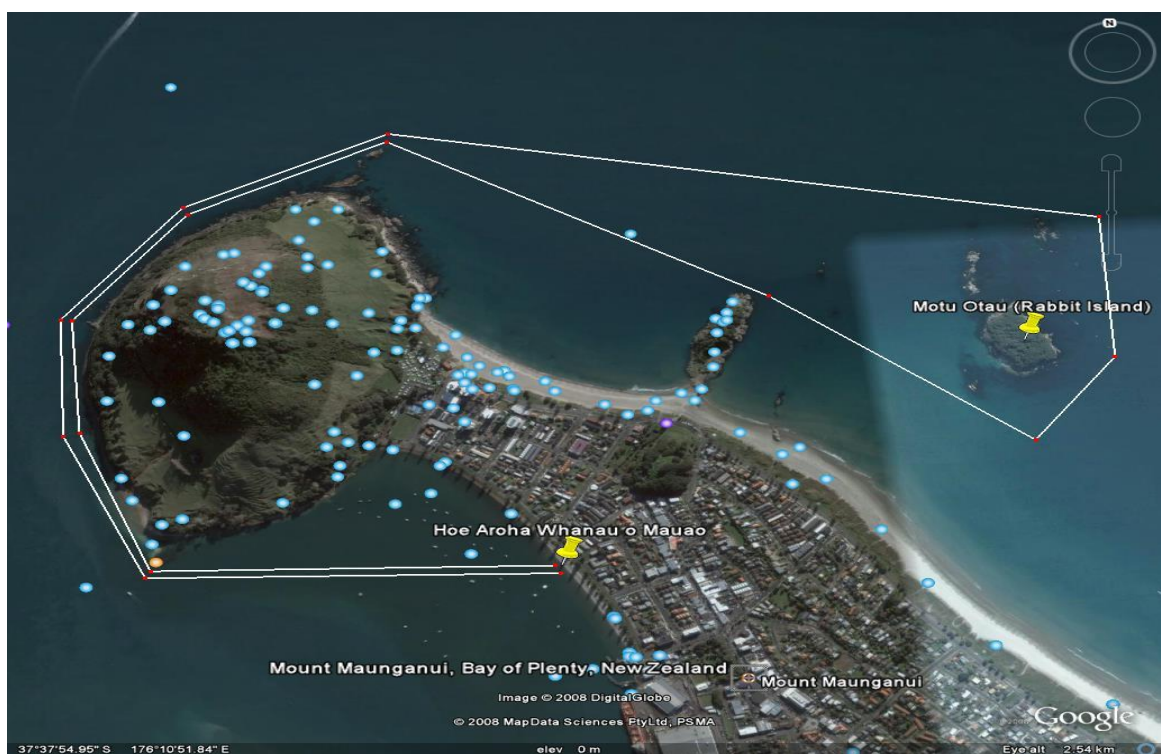
## 2021



Option 1 - W6 Course - Pilot Bay to Omanu Surf Club return

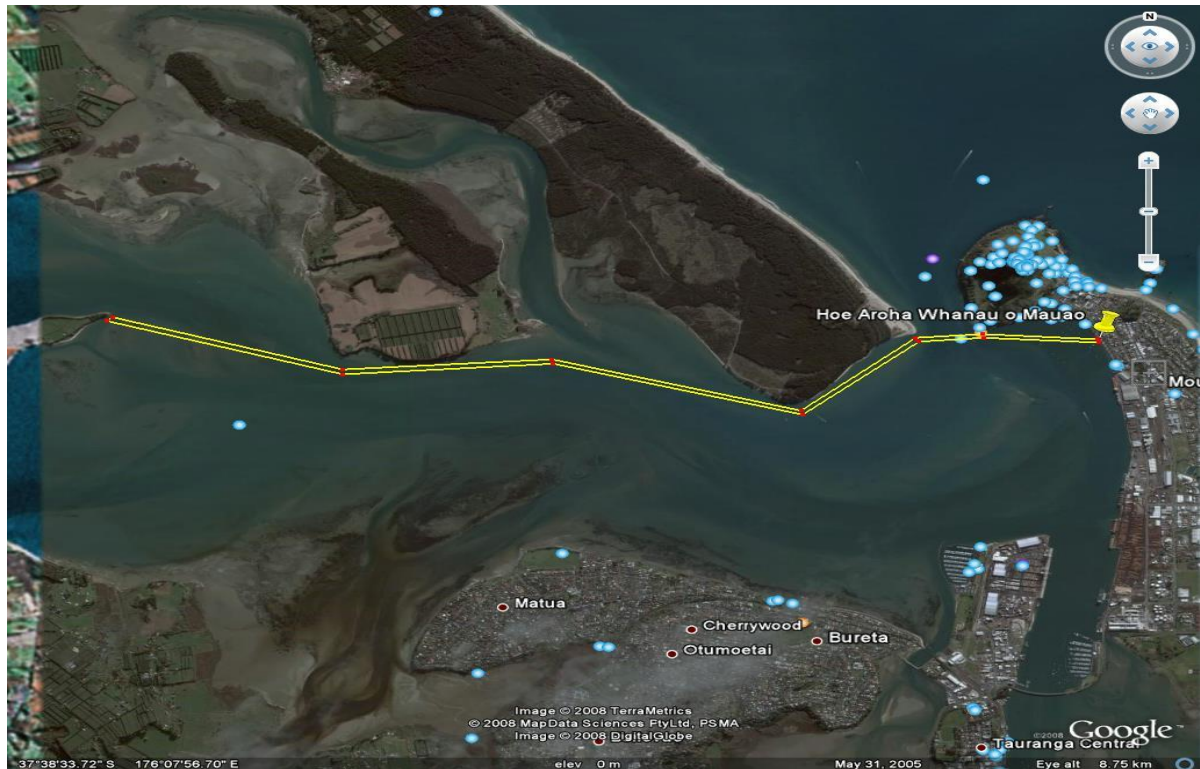


Option 1 - W1/W2 and Junior Course – Pilot Bay to Motuotau return





## Option 2 – W6 Course – Pilot Bay to Motuhoa Return



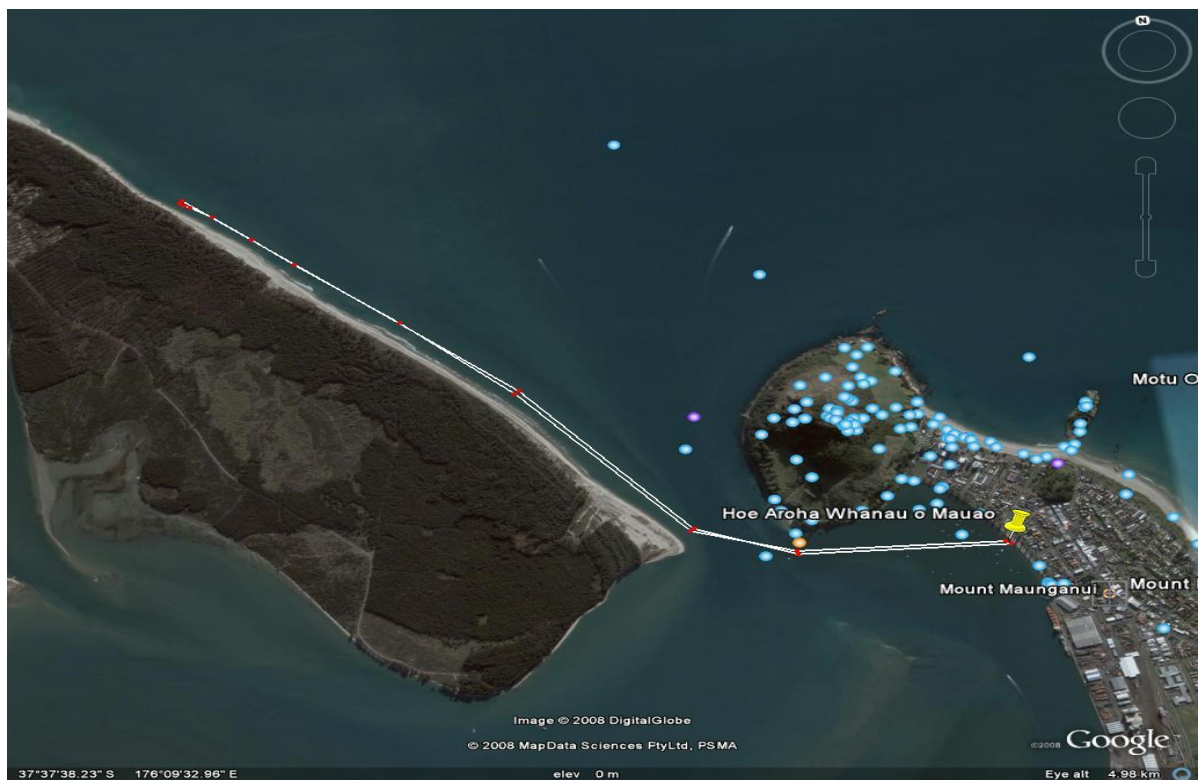
## Option 2 – W1/W2 and Junior Course – Pilot Bay to Rangiwaea Return



### Option 3 – W6 Course – Pilot Bay up Matakana Surf Side Return



### Option 3 – W1/W2 and Junior Course – Pilot Bay up Matakana Surf Side Return





# MAUAO OCEAN HOE SERIES

## 2021



### Safety Rules

All paddlers must comply with the NKOA safety rules and regulations as follows:

#### W6 Waka:

- must be of a seaworthy design and construction
- must carry adequate bailers (2)
- must carry one flotation device per paddler (6). Junior paddlers must wear their lifejackets during the race.
- must carry two spare paddles
- must be fitted with sprayskirts
- Kiato and Ama must be securely lashed. Extra lashings in case of repairs are necessary.
- must be fitted with a tow rope. One end must be securely fitted to the front taumanu with the rest either in a bag or fastened to the front taumanu

#### W1/W2 Waka:

- must be of a seaworthy design and construction
- Waka with cockpits must carry bailer and must be fitted with sprayskirts. Rudder optional but recommended for open water / rough water
- must carry one flare
- Must carry one flotation device per paddler.
- W1 and W2 Waka must carry one spare paddle
- All W1 and W2 waka must have leg ropes attached.

#### Paddlers / Crews:

- must be capable of handling their Waka in the expected conditions
- must be able to swim and be comfortable in the expected conditions
- must be trained in and capable of self rescue techniques e.g. righting a capsized Waka
- must have a degree of skill and fitness to enable them to finish the race in any conditions that might be expected
- must be dressed for the expected conditions

**The Race Director has the right during the course of the race to withdraw any team, if in his/her opinion, it is considered that the crew is in danger or likely to be unable to complete the race.**

#### Note:

Contact tracing, QR code & handsanitiser will be available at registration tent for those non paddlers who have not entered via Wakaama NZ online registrations. Race will be postponed in the event we are in Level 2+. Be mindful of our waka whanau and stay healthy and well. Any postponements or cancellations will be updated on the WANZ website.